

Barrow Area Information Database - Internet Map Server (BAID-IMS)

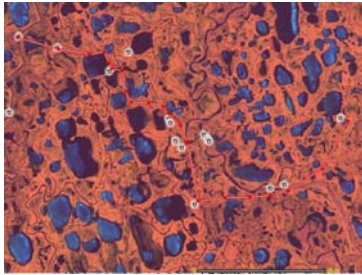


Craig Tweedie¹, Allison Graves², David Zaks¹, Shawn Serbin¹

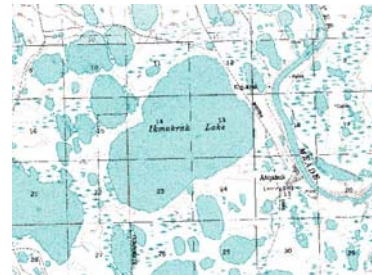
1 - Arctic Ecology Lab, Department of Plant Biology, 100 N. Kedzie Hall, Michigan State University, East Lansing, MI 48824 tweedie@msu.edu
2 - Nuna Technologies 920 Willow, Homer, AK 99603 nunatech@usa.net



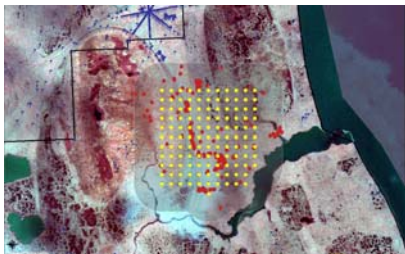
A Product of the Barrow Arctic Science Consortium Digital Working Group



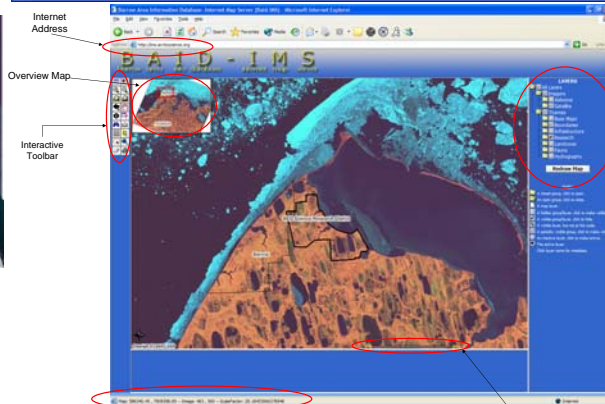
BAID-IMS can be used to plan a route with GPS points and measure the distance to your favorite point of interest such as a subsistence camp or cabin.



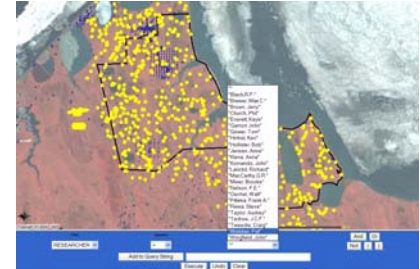
USGS quads/topographic maps are available for the full area of interest in BAID-IMS.



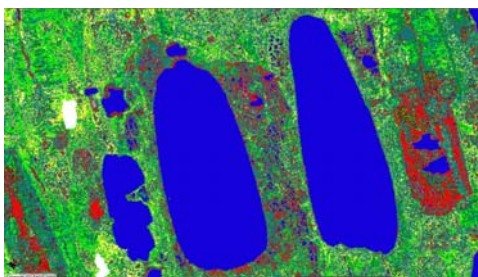
If you are a new researcher in the Barrow area, you can buffer the location of known research sites to find the best area to establish your plots in order to minimize disturbance to existing field projects.



Open a folder to view an expanded list of layers and themes that you can view and/or query.



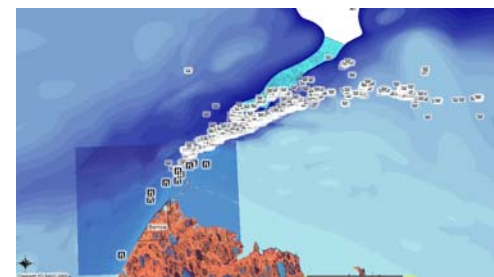
Queries can be made on all layers/themes that have attributable data such as the name of a researcher associated with a given site. Research sites of Professor Patrick J. Webber are highlighted above.



Land cover maps such as this one derived from IKONOS high spatial-resolution satellite imagery, can be used to locate different vegetation types (including your favorite berry picking area).

Find GPS coordinates to a location of interest here (WGS 84, UTM zone 4 N).

The scale bar can be changed to read in miles, feet, kilometers and meters.



Locations of Bowhead whale sightings (Spring 2003) and locations of perches used for spring Bowhead whale census research shown on a map of ocean depths.



Land ownership and existing infrastructure such as power poles and roads are important features for researchers to consider when planning their projects.



Important habitat for the Stellers Eider duck are noted in BAID-IMS so that research activity can be managed in such a way that impact to this endangered species is minimized.